



PROJECTS

PROFILES

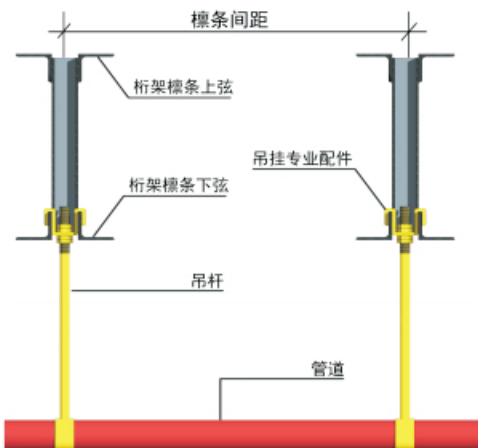
上海皮特森金属结构系统有限公司
Shanghai Peterson Metal Building System Co.,Ltd.

埃马克(中国)—德国高端制造装备中心 EMAG-High-tech Manufacturing Center from Germany



由德国埃马克集团投资的埃马克(中国)机械有限公司位于金坛常州开发区。原设计中屋面采用高频H型钢作为檩条,用钢量高且不方便机电设备吊挂,项目实施过程中修改为皮特森钢桁架作为檩条后,不仅为总包节约了32%的屋面檩条用钢量,15%的屋面檩条造价,同时方便的吊挂,节约了机电安装时间和费用。

Wholly foreign-owned enterprise invested by German EMAG Group, EMAG (China) Machinery Co., Ltd. is located in Jintan Changzhou Development Zone. The original design of Roof Purlin system as H beam is quite heavy and difficult for hanging MEP. The General Contractor finally choose the Peterson Steel Joist as the Roof Purlin, which not only saved about 32% of the steel tonnage, about 15% of the Cost, But also facilitated the installation of the MEP Works.



行业(Industry) : 高端机械制造
项目地址(Address) : 常州
面积(Area): 56,700m²
柱距(Bay Spacing) : 12m



上海皮特森金属结构系统有限公司
Shanghai Peterson Metal Building System Co.,Ltd.

总部地址：上海市吴中路1050号盛世莲花广场B幢611室

电话：021-52695611

传真：021-52695633

热线：13801918906

工厂地址：浙江省湖州市长兴县林城镇省际产业转移示范区

电话：0572-6301183

传真：0572-6301183

热线：17757220919



PROJECTS

PROFILES

上海皮特森金属结构系统有限公司
Shanghai Peterson Metal Building System Co.,Ltd.

苏州艾默生—世界领先的环境优化设备制造 Emerson—the World's Leading Environmental Optimization Equipment Manufacturer



One of Worldwide Fortune 500, Emerson invested in Suzhou, China with a total investment of 180 million US dollars. It mainly produces scroll compressors, condensing units, fluid control components and other products, and provides technology and after-sales services. Shanghai Peterson was honored to be the Roof Structure Supplier for Phase IV, V, VI Expansion.

行业(Industry) : 机械制造
项目地址(Address) : 苏州
面积(Area): 13,780m²
柱距(Bay Spacing) : 10.8m with FM

世界500强之一的艾默生公司于1999年开始总投资1.8亿美元落户于美丽的苏州工业园区，主要生产谷轮涡旋压缩机、冷凝机组、流体控制元器件等产品，并提供技术和售后服务。上海皮特森荣幸成为苏州艾默生四期，五期和六期扩建的屋面结构供应商。





上海皮特森金属结构系统有限公司
Shanghai Peterson Metal Building System Co.,Ltd.

总部地址：上海市吴中路1050号盛世莲花广场B幢611室 电话：021-52695611 传真：021-52695633 热线：13801918906
工厂地址：浙江省湖州市长兴县林城镇省际产业转移示范区 电话：0572-6301183 传真：0572-6301183 热线：17757220919



PROJECTS

PROFILES

上海皮特森金属结构系统有限公司
Shanghai Peterson Metal Building System Co.,Ltd.

晋江安踏产业园—采用皮特森钢桁架的产业园 Anta Industrial Park—Modern industrial Park Using Peterson Steel Joist



Anta Group is leading company especially in Sporting Industry. Anta Jinjiang Industrial Park is located in Jinjiang, Fujian Province, near the sea. Its basic design wind pressure is as high as 0.80kn/m^2 . It belongs to Class A area. The ordinary C/Z cold-formed thin-walled purlin can not meet the Structural requirements. The high-strength and long-span Peterson Steel Joist was finally selected to replace the high-frequency welded H-section Steel Beam, which not only save nearly 50% of the Cost of Roof Construction of Anta Project, but also save the Time and Cost for MEP Installation.

行业(Industry) :	体育用品
项目地址(Address) :	晋江
面积(Area):	56,700m ²
柱距(Bay Spacing) :	11m,15m

安踏集团是国内体育用品龙头企业。2016年安踏集团在福建晋江投资20亿建立安踏晋江产业园，由于项目靠近海边，设计基本风压高达 0.80kn/m^2 ，属于A类地区，普通C/Z冷弯薄壁檩条无法满足结构技术要求，上海皮特森高强度大跨度钢桁架最终被选择用于取代高频焊H型钢，为安踏项目的屋面工程节约了近50%的用钢量，同时方便了机电设备的吊挂安装。





上海皮特森金属结构系统有限公司
Shanghai Peterson Metal Building System Co.,Ltd.

总部地址：上海市吴中路1050号盛世莲花广场B幢611室 电话：021-52695611 传真：021-52695633 热线：13801918906
工厂地址：浙江省湖州市长兴县林城镇省际产业转移示范区 电话：0572-6301183 传真：0572-6301183 热线：17757220919



PROJECTS

PROFILES

上海皮特森金属结构系统有限公司
Shanghai Peterson Metal Building System Co., Ltd.

南京法雷奥—专业生产汽车传动零部件的中法合资企业 Valeo-Joint Venture Specializing in Manufacturing Automotive Drive Parts



Nanjing Valeo is an industrial group specializing in the design, development, production and sales of automotive parts, systems and modules. The new Plant has the Challenge Grid Size 36mX27m Shanghai Peterson is Honored to providing the design and manufacture of the Steel Truss and Joists for Nanjing Valeo.

南京法雷奥是一家专业致力于汽车零部件、系统、模块的设计、开发、生产及销售的工业集团。新工厂的富有挑战性柱网高达36mX27m。上海皮特森非常荣幸为法雷奥南京工厂提供大跨度钢桁架屋面的设计与制造。

行业(Industry) : 汽车配件
项目地址(Address) : 南京
面积(Area): 32,000m²
柱距(Bay Spacing) : 12m





上海皮特森金属结构系统有限公司
Shanghai Peterson Metal Building System Co.,Ltd.

总部地址：上海市吴中路1050号盛世莲花广场B幢611室

电话：021-52695611

传真：021-52695633

热线：13801918906

工厂地址：浙江省湖州市长兴县林城镇省际产业转移示范区

电话：0572-6301183

传真：0572-6301183

热线：17757220919



PROJECTS

PROFILES

上海皮特森金属结构系统有限公司
Shanghai Peterson Metal Building System Co., Ltd.

我们的合作伙伴

Our Partners



Das Auto.



more.....



总部：上海市闵行区吴中路1050号虹桥盛世莲花广场B栋611室

电话：(86-21) 52695611

传真：(86-21) 52695633

邮编：201103

<http://www.petersonsteeljoist.com>

工厂地址：浙江省湖州市长兴县林城镇省际产业转移示范区



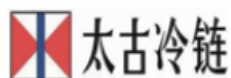
PROJECTS

PROFILES

上海皮特森金属结构系统有限公司
Shanghai Peterson Metal Building System Co., Ltd.

选择皮特森钢桁架，跨越您的想象

Choose Peterson, Span Your Imagination



ROEWE 荣威



总部：上海市闵行区吴中路1050号虹桥盛世莲花广场B栋611室

电话：(86-21) 52695611

传真：(86-21) 52695633

邮编：201103

<http://www.petersonsteeljoist.com>

工厂地址：浙江省湖州市长兴县林城镇省际产业转移示范区



PROJECTS

PROFILES

上海皮特森金属结构系统有限公司
Shanghai Peterson Metal Building System Co.,Ltd.

辉瑞制药—全球生物技术中心 Pfizer Pharmaceuticals-Global Centre for Biotechnology



上海皮特森公司很荣幸在2017年承接了辉瑞制药杭州项目。辉瑞公司是一家拥有150多年历史以研发为基础的跨国制药公司。位于浙江杭州的工厂是辉瑞全球生物技术中心之一，也是首个在中国建立的单细胞克隆抗体开发和生产基地。皮特森公司根据辉瑞杭州工厂结构要求，为辉瑞制药杭州工厂定制了跨度13.7m的桁架檩条，不仅满足业主在大空间上的特殊要求，方便了机电设备的安装，同时节约了工程项目投资。

Shanghai Peterson Company is honored to undertake Pfizer Pharmaceutical Hangzhou Project in 2017. Pfizer is a multinational pharmaceutical company with more than 150 years of history based on R&D. The Plant in Hangzhou, Zhejiang Province, is one of Pfizer's global biotechnology centers and the first monoclonal antibody development and production base in China. According to the structural requirements of Pfizer Hangzhou factory, Shanghai Peterson specially customizes 13.7m Long bay Steel Joist for Pfizer Pharmaceutical Hangzhou New Plant, which not only to meet the special long bay requirements of owners, but also easy the way for M&E, and finally save the Project investment.



行业(Industry) :	医药
项目地址(Address) :	杭州
面积(Area) :	7,600m ²
柱距(Bay Spacing) :	13.7m



上海皮特森金属结构系统有限公司
Shanghai Peterson Metal Building System Co.,Ltd.

总部地址：上海市吴中路1050号盛世莲花广场B幢611室

电话：021-52695611

传真：021-52695633

热线：13801918906

工厂地址：浙江省湖州市长兴县林城镇省际产业转移示范区

电话：0572-6301183

传真：0572-6301183

热线：17757220919



PROJECTS

PROFILES

上海皮特森金属结构系统有限公司
Shanghai Peterson Metal Building System Co.,Ltd.

普洛斯—全球领先的物流及智慧科技投资管理 GLP – Leading Global Logistics and Intelligent Technology Investment Managers

上海皮特森公司很荣幸从2012年开始陆续承接了普洛斯上海宝山、义乌、长沙、唐山、武汉、马尾、芜湖等仓储物流的项目，完成项目面积达31.4万平方米。普洛斯是中国领先的现代产业园提供商和服务商，也是中国市场最早启动智慧物流及相关产业生态系统的打造者。考虑到上海宝山项目要成为上海首个绿色生态供应链平台，屋面系统采用了皮特森钢桁架作为屋面檩条，不仅降低了用钢量，同时满足业主绿色建筑、装配式建筑以及在建筑美学上的高标准要求。



Shanghai Peterson Company has been honored to undertake the distribution and logistics projects for GLP in Shanghai, Yiwu, Changsha, Tangshan, Wuhan, Mawei and Wuhu since 2012, with more than 314,000 sq.m total area. GLP is the leading Logistics and service provider of modern industrial parks in China. It is also the earliest maker of intelligent logistics and related industrial ecosystems in the Chinese market. In order to be the first green ecological supply chain platform in Shanghai, the Roof System of GLP Shanghai Project adopts Peterson Steel Joist as Purlins, which not only reduces the steel consumption, but also meets the high standard requirements of Green Building.

行业(Industry) :	物流
项目地址(Address) :	上海宝山
面积(Area) :	108,400m ²
柱距(Bay Spacing) :	12m



上海皮特森金属结构系统有限公司
Shanghai Peterson Metal Building System Co.,Ltd.

总部地址：上海市吴中路1050号盛世莲花广场B幢611室 电话：021-52695611 传真：021-52695633 热线：13801918906
工厂地址：浙江省湖州市长兴县林城镇省际产业转移示范区 电话：0572-6301183 传真：0572-6301183 热线：17757220919



PROJECTS

PROFILES

上海皮特森金属结构系统有限公司
Shanghai Peterson Metal Building System Co., Ltd.

强森金属—皮特森设计并建造的现代化工厂 Johnson Metal-Peterson Design & Built Modern Plant



浙江强森金属结构系统有限公司于2016年在浙江湖州长兴工业园区新建18000平方米厂房项目，强森金属厂房项目屋面系统采用上海皮特森的大跨度屋面桁架檩条R550K02-12000，夹层楼面系统采用上海皮特森的空腹楼面桁架F800LH05-12000，从而使强森金属的新工厂成为浙江湖州地区典型而且时尚的美式建筑。

In 2016, Zhejiang Johnson Metal Building System Co., Ltd. built a new Plant in Zhejiang Huzhou Industrial Park. The New Plant covers an area of 18,000 square meters. The roofing system of Johnson Metal workshop adopts Shanghai Peterson's large-span Roof Joist purlin PSJ-R550k02-12000, and the Mezzanine Floor system adopts Shanghai Peterson's Open Web Truss PSJ-F800LH05-12000. The Professional production of Shanghai Peterson makes the Johnson Metal New Plant a very attractive building in Huzhou City, Zhejiang Province.



行业(Industry) :	金属制造
项目地址(Address) :	浙江
面积(Area) :	18,000m ²
柱距(Bay Spacing) :	12m



上海皮特森金属结构系统有限公司
Shanghai Peterson Metal Building System Co.,Ltd.

总部地址：上海市吴中路1050号盛世莲花广场B幢611室 电话：021-52695611 传真：021-52695633 热线：13801918906
工厂地址：浙江省湖州市长兴县林城镇省际产业转移示范区 电话：0572-6301183 传真：0572-6301183 热线：17757220919



PROJECTS

PROFILES

上海皮特森金属结构系统有限公司
Shanghai Peterson Metal Building System Co., Ltd.

上汽郑州—自主品牌新能源车制造基地

SAIC Motor Zhengzhou—New Energy Vehicle Manufacturing Base

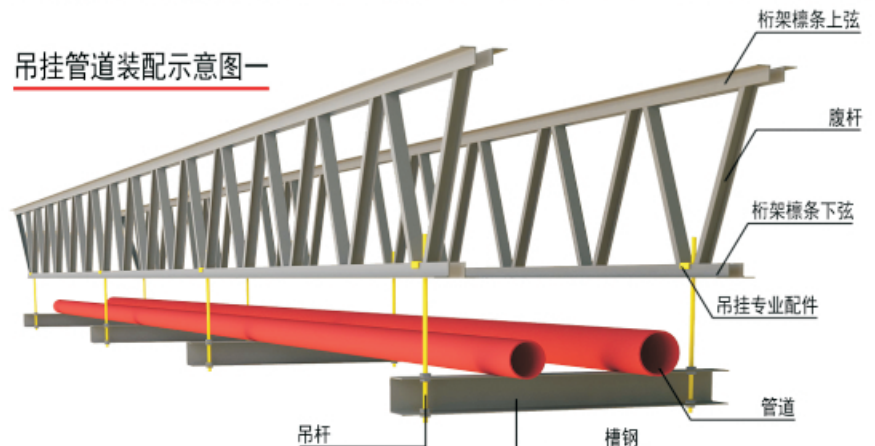


自从国家出台各种政策，大力支持新能源汽车的发展，上汽集团紧跟国家政策，在郑州建立自主品牌新能源汽车的基地，由于汽车生产要求大空间和大柱距，业主提出了柱距15m的超大结构要求，中国汽车工程有限公司最终选择了皮特森钢桁架PSJ-R650K02-15000以满足业主大柱距和柔性流水线的要求。

Since the state issued various policies to vigorously support the development of new energy vehicles, SAIC Motor has followed the national policy to build a self-owned new brand energy vehicles base in Zhengzhou, Henan Province and ask for 15m long bay structural system. The Peterson steel Joists (PSJ-R650K02-15000) were finally chosen to meet the owners of Long Bay System requirement and the need for flexible assembly line.



吊挂管道装配示意图一



行业(Industry) : 汽车零部件
项目地址(Address) : 郑州
面积(Area) : 47,650m²
柱距(Bay Spacing) : 15m



上海皮特森金属结构系统有限公司
Shanghai Peterson Metal Building System Co.,Ltd.

总部地址：上海市吴中路1050号盛世莲花广场B幢611室 电话：021-52695611 传真：021-52695633 热线：13801918906
工厂地址：浙江省湖州市长兴县林城镇省际产业转移示范区 电话：0572-6301183 传真：0572-6301183 热线：17757220919



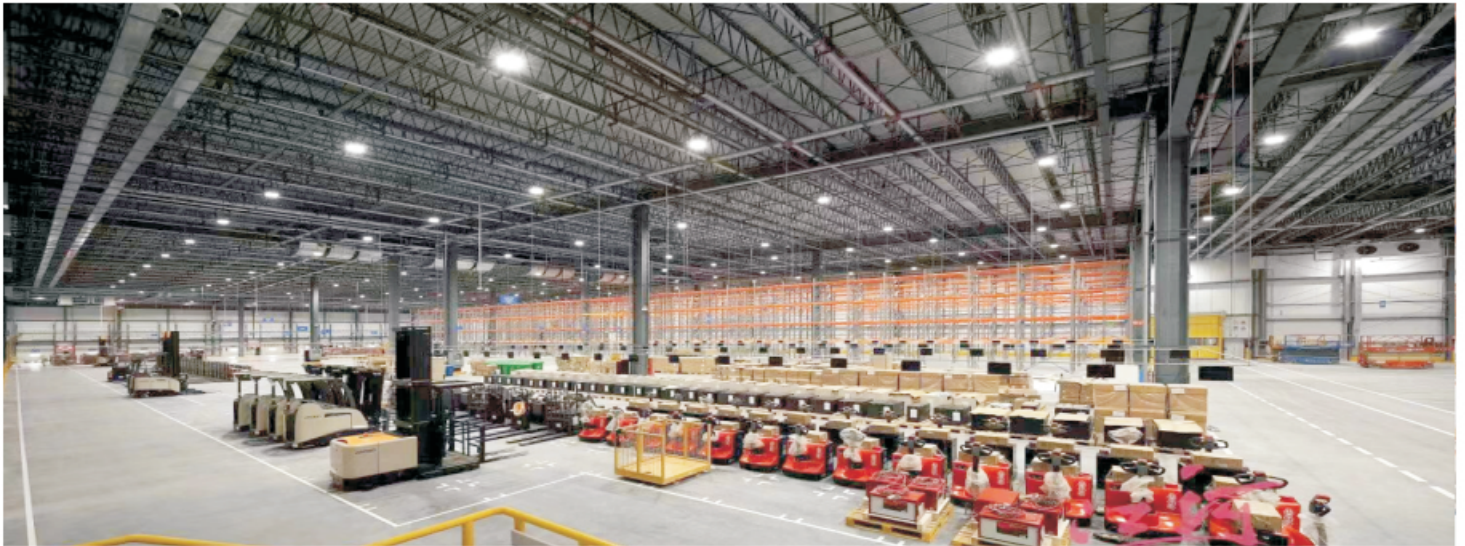
PROJECTS

PROFILES

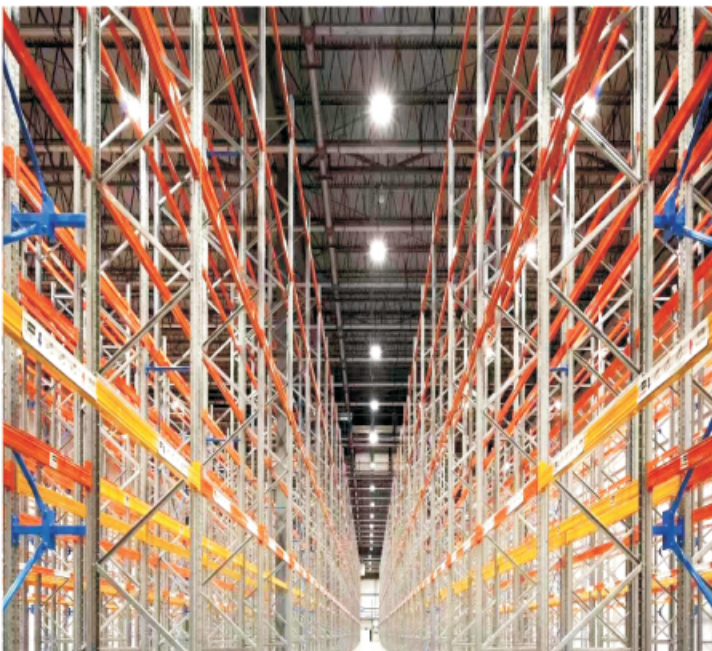
上海皮特森金属结构系统有限公司
Shanghai Peterson Metal Building System Co.,Ltd.

沃尔玛—斥巨资升级冷链物流

Wal Mart – Upgrading Supply Cold Chain with Giant Investment



Shanghai Peterson Company is honored to undertake Wal-Mart's cold chain logistics project in Dongguan in 2018. Wal-Mart has invested more than 700 million yuan in the South China Fresh Distribution Center in Dongguan, making the South China Fresh Distribution Center with cold chain logistics the largest single investment since Wal-Mart entered China. Wal-Mart Dongguan Cold Storage adopts the Construction method of American style. In order to be convenient to user, the 18 m long Bay spacing structure is required, which makes using Peterson Steel Joists be the excellent solution for the Roof System.



上海皮特森公司很荣幸在2018年承接了沃尔玛在东莞的冷链物流项目。沃尔玛在东莞兴建的华南生鲜配送中心总投资超过7亿人民币，采用冷链物流进行配送的华南生鲜配送中心是沃尔玛入华以来最大的单笔投资。沃尔玛东莞冷库的建造采用美式冷库的建造方式，为方便业主使用，要求采用近18m的大柱距结构方案，使得屋面系统采用皮特森钢桁架檩条成为完美的解决方案。

行业(Industry) :	冷链物流
项目地址(Address) :	东莞
面积(Area) :	29,446m ²
柱距(Bay Spacing) :	18m



上海皮特森金属结构系统有限公司
Shanghai Peterson Metal Building System Co.,Ltd.

总部地址：上海市吴中路1050号盛世莲花广场B幢611室 电话：021-52695611 传真：021-52695633 热线：13801918906
工厂地址：浙江省湖州市长兴县林城镇省际产业转移示范区 电话：0572-6301183 传真：0572-6301183 热线：17757220919